

# MONTHLY MEMBERSHIP PROGRESS REPORT

District 3232F1

Results as of: 6/30/2024

GMT:

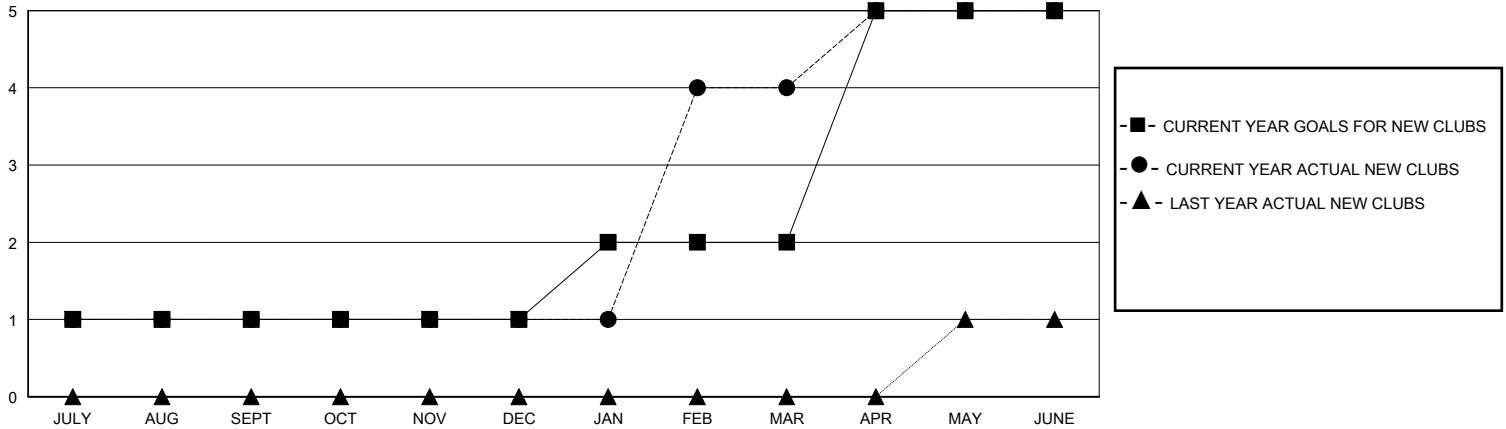
LOCATION INDIA

GMT CA

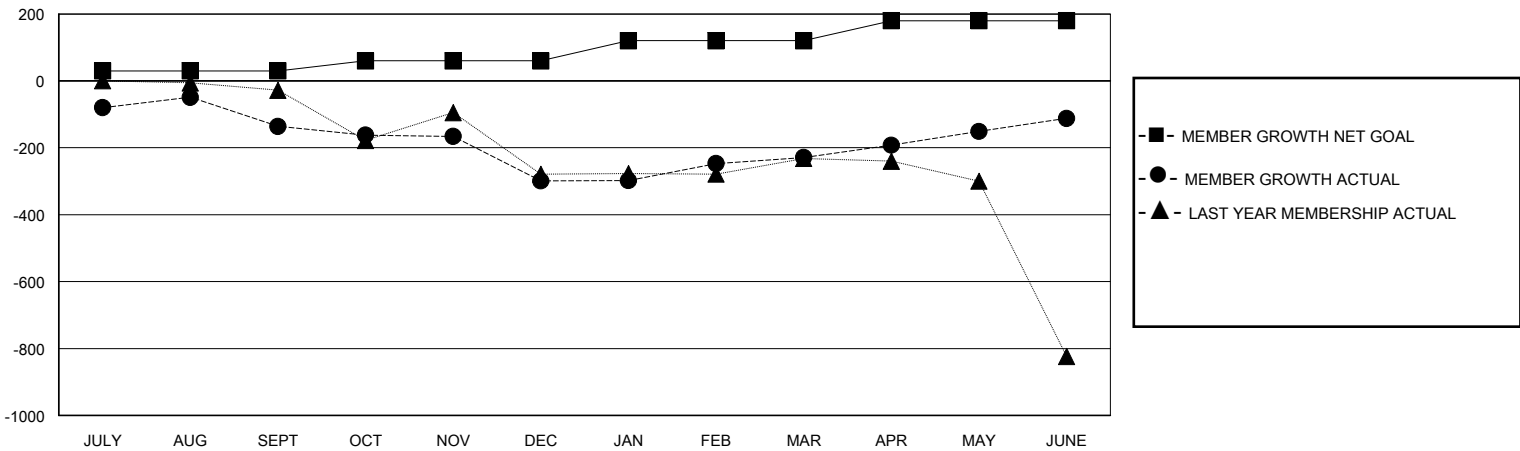
Clubs			
RESULTS FOR 2023-2024			
QUARTER	NEW CLUB GOAL	NEW CLUBS	DROPPED CLUBS
JULY/AUG/SEPT	1	1	3
OCT/NOV/DEC	0	0	7
JAN/FEB/MAR	1	3	1
APR/MAY/JUNE	3	1	0

Members			
RESULTS FOR 2023-2024			
QUARTER	MEMBER GROWTH NET GOAL	MEMBER GROWTH ACTUAL	DROPPED MEMBERS ACTUAL (including transfers)
JULY/AUG/SEPT	30	145	256
OCT/NOV/DEC	30	164	315
JAN/FEB/MAR	60	98	27
APR/MAY/JUNE	60	510	341

GOALS AND ACTUAL NEW CLUBS CUMULATIVE



GOALS AND ACTUAL MEMBERS CUMULATIVE



DROPPED CLUBS: 11	64 CLUBS OF 127 ADDED 1 OR MORE NEW MEMBERS	<b>GENDER DISTRIBUTION</b> MALE 2,075 (64.04%) FEMALE 1,165 (35.96%)
<b>DROPPED MEMBERS</b> DECEASED 12 CLUB CANCELLED 313 OTHER 612 TOTAL 937	<a href="#">CLICK HERE FOR CUMULATIVE MEMBERSHIP DATA</a>	TOTAL FAMILY UNIT MEMBERS 1,509 FAMILY MEMBERS PAYING HALF DUES 902